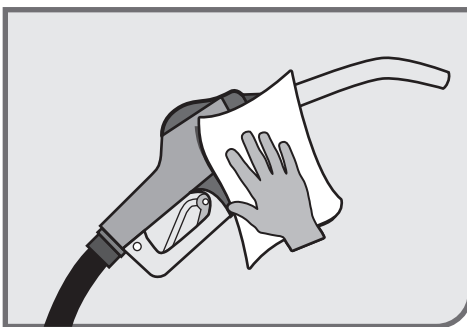
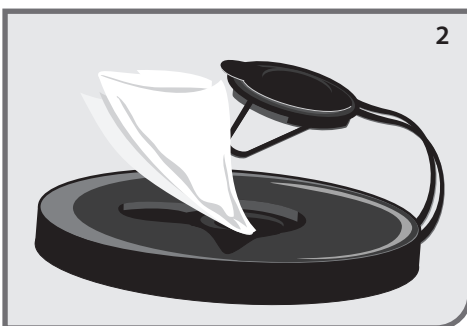
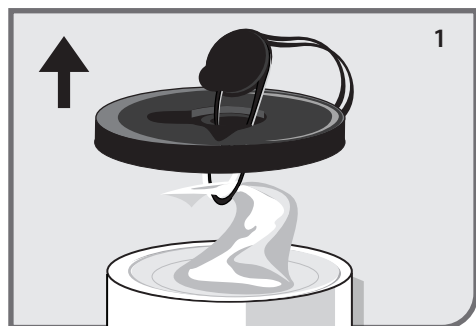




# MULTI-SURFACE CLEANING WIPES CLEANING INSTRUCTIONS



## EFFECTIVE ON

- Fuel dispensers
- Dispenser nozzles
- Gas island surfaces
- Door handles
- Garbage cans
- Seating areas
- Tools
- Equipment
- Sumps
- Painted metals
- Other surfaces

## FREQUENCY

As needed. For best results, check surface for compatibility prior to cleaning with OTIS Wipes.

## TASK DURATION

1-4 minutes per task when used weekly.

## TO CLEAN

### Preparation:

1. Open container lid and pop open center cap on top of lid. Remove the entire lid from the OTIS Wipes container.
2. Open the small, circular center opening in the lid. Insert the loop on the lid into the X-shaped opening.
  - a. Pull the first, center wipe in the container, and insert a corner of the wipe into the loop.
  - b. Pull the loop back through the lid opening, and reattach the lid.
3. Clean surface with OTIS Wipes. For detailed cleaning, squeeze excess solution from wipe.
4. Repeat as necessary.



Registered by NSF  
Category Code A1  
Registration No. 153134



- Notes:**
- For use on food preparation surfaces, just rinse with potable water after use.
  - Not recommended for use on oxidized surfaces.
  - For a streak-free finish, wring wipe before use, wipe surface and the rinse with water.



**HAVE QUESTIONS? NEED TRAINING?  
WE'RE HERE TO HELP!**



Visit [www.mycaf.com](http://www.mycaf.com) for additional product information, SDS, training materials, product videos and more.



[www.mycaf.com](http://www.mycaf.com) | (888) 737-0025 | PO Box 1121, Maple Valley, WA 98038

Copyright © 2017 CAF, INC. All Rights Reserved.