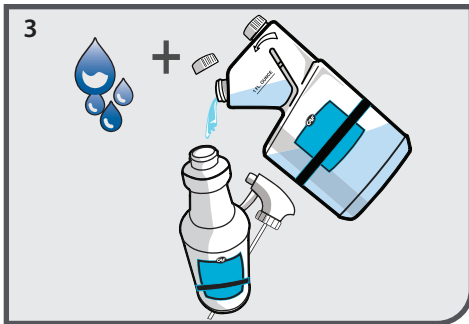
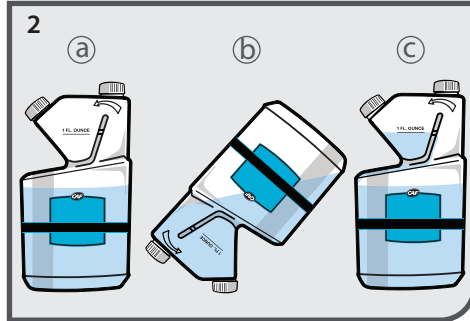
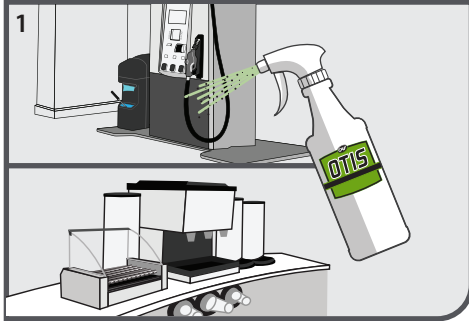




# GLASS CLEANER CLEANING INSTRUCTIONS



## EFFECTIVE ON

- Glass
- Windows
- Mirrors
- Display cases
- Appliances
- Display monitors
- Cooler doors
- Sneeze guards
- Plexiglass

## FREQUENCY

As needed (follow company procedures)

## TASK DURATION

10-15 minutes

## PREPARATION

1. Pre-clean heavily soiled areas.

## TO MIX

2. With both bottle caps secure (a), tip the bottle following the direction of the arrow on the bottle and allow to fill (b). Return upright, and allow excess to drain (c).

3. Remove cap from measuring section, add to 32 oz spray bottle and fill with water.

## TO APPLY

4. Spray surface with a light mist. Wipe dry with a clean cloth or towel.



HAVE QUESTIONS? NEED TRAINING?  
WE'RE HERE TO HELP!



FOR TRAINING VIDEOS AND PRODUCT INFORMATION:  
[www.mycaf.com/training](http://www.mycaf.com/training) (888) 737-0025



[www.mycaf.com](http://www.mycaf.com) | (888) 737-0025 | PO Box 1121, Maple Valley, WA 98038

Copyright © 2020 CAF, INC., All Rights Reserved.